

# Gravity Feed Oilers



***PRO/MARK INDUSTRIALS***

Div. R.D. Lewis Sales Limited

**Lubrication & Fluid Handling Solutions**

P.O. Box 1503, Woodstock, ON N4S 0A7 Phone: (519) 658-3204 E-Mail: [info@promarkindustrials.ca](mailto:info@promarkindustrials.ca)

# Gravity Feed Oilers

## APPLICATIONS:

The gravity feed oilers work in a wide range of industrial lubricating applications. The rate of oil feed is adjustable and a lock ring maintains the setting. In bearing or gear lubrication, the gravity feed oilers provide dependable lubrication in the most demanding environments.

## FEATURES:

- Three position toggle switch provides easy to use on-off control, and a flushing option to avoid dry start-ups.
- Vented sight chamber ensures proper operation when used with tight or high speed bearings.
- Copper brazing of all steel connections provides long life and leak proof design.

## KG

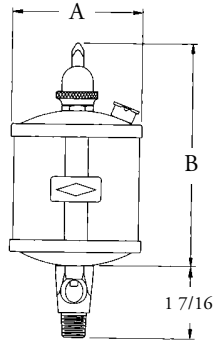
- Heavy wall glass reservoirs and sight chambers operate continuously at 250°F.
- Nickel plating offers superior corrosion resistance.

## KL

- Plastic reservoirs have reinforced ribs for long life and impact resistance.
- Zinc plating resists corrosion.



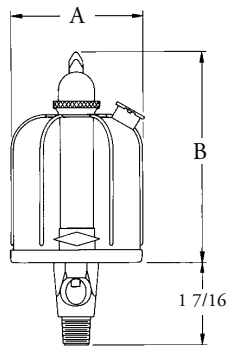
37016



KG



30325



KL

## SPECIFICATIONS - KG

Max. Operating Temp.	250°F Continuous
Reservoir	Heavy Wall Heat Resistant Glass
Oil Sight	Heavy Wall Heat Resistant Glass
Gaskets	Buna-N
Materials	Heavy Gauge Steel
Finish	Bright Nickel Plate
Needle Valve	Steel

## SELECTION CHART - KG

Model No.	Capacity	Connection (NPT)	Dimensions (in.)	
			A	B
37011	1 oz.	1/8	1-5/8	3-1/4
37012	1 oz.	1/4	1-5/8	3-1/4
37013	2.5 oz.	1/8	2-1/8	4
37014	2.5 oz.	1/4	2-1/8	4
37015	5 oz.	1/8	2-5/8	4-5/8
37016	5 oz.	1/4	2-5/8	4-5/8
37017	5 oz.	3/8	2-5/8	4-5/8
37018	10 oz.	1/4	3-1/8	5-3/8
37019	10 oz.	3/8	3-1/8	5-3/8

## SPECIFICATIONS - KL

Max. Operating Temp.	165°F Continuous
Reservoir	Butyrate Plastic
Oil Sight	Acrylic Plastic
Sight Gaskets	Buna-N
Materials	Steel and Brass
Finish	Bright Zinc Plated
Needle Valve	Steel

## SELECTION CHART - KL

Model No.	Capacity	Connection (NPT)	Dimensions (in.)	
			A	B
30320	1 oz.	1/8	1-5/8	2-5/8
30321	1 oz.	1/4	1-5/8	2-5/8
30322	2 oz.	1/8	1-15/16	3-1/16
30323	2 oz.	1/4	1-15/16	3-1/16
30324	4 oz.	1/8	2-5/16	3-7/8
30325	4 oz.	1/4	2-5/16	3-7/8
30326	4 oz.	3/8	2-5/16	3-7/8
30327	8 oz.	1/8	2-5/8	4-15/16
30328	8 oz.	1/4	2-5/8	4-15/16
30329	8 oz.	3/8	2-5/8	4-15/16

**PRO/MARK INDUSTRIALS**

Div. R.D. Lewis Sales Limited

Lubrication & Fluid Handling Solutions

# Atlas Gravity Feed Oilers

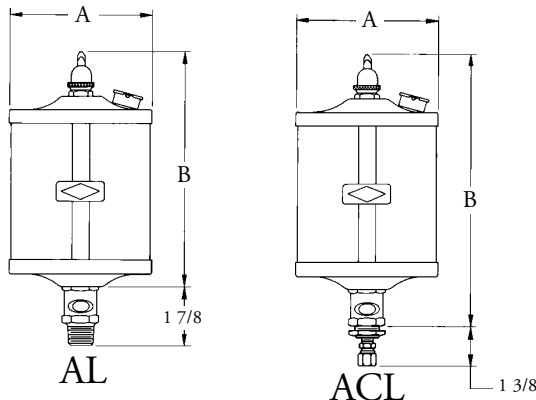
## APPLICATIONS:

The Atlas gravity feed oiler is used in heavy-duty applications where a large oil capacity is needed and an adjustable rate of oil is required. Silver brazed construction of the reinforced brass assembly provides long life in high vibration applications.

The Atlas oiler is adjustable for varying rates of oil flow used in bearing or machinery lubrication. The adjustable drip rates are easily set and controlled with a lock ring for maximum versatility.

## FEATURES:

- Heavy wall heat resistant glass reservoirs and sights providing service in temperatures to 250°F.
- Acrylic reservoir versions have heavy walls for long life in applications to 165°F.
- Three position toggle switch provides easy to use on-off control, and a flushing option to avoid dry start-ups.
- Direct mounting with NPT threads (AL) or remote mounting with 3/4-16 mounting stud and 1/4" tubing connections (ACL) simplifies installation.
- Silver brazing of all brass construction provides long life and leak proof design.
- Clear lacquer finish resists corrosion.



## SELECTION CHART - AL

Locking Ring Mechanism - Direct Mounting

Model No.		Capacity	Connection (NPT)	Dimensions (in.)	
Glass	Acrylic			A	B
31511	31410	10 oz.	1/4	3-1/8	5-9/16
31512	31411	10 oz.	3/8	3-1/8	5-9/16
31517	31416	1 pt.	3/8	3-5/8	6-9/16
31518	31417	1 pt.	1/2	3-5/8	6-9/16
31543	31432	1 qt.	1/2	4-7/16	7-5/8
31581	31480	2.5 qt.	1/2	5-11/16	9-3/4
-	31481	1 gal.	1/2	5-11/16	14-13/16

## SPECIFICATIONS

Max. Operating Temp.	Glass 250°F Continuous Acrylic 165°F Continuous
Reservoir	Heavy Wall Heat Resistant Glass Heavy Wall Acrylic Plastic
Oil Sight	Heavy Wall Heat Resistant Glass Heavy Wall Acrylic Plastic
Gasket	Buna-N
Material	Brass
Finish	Lacquered Satin Finish
Needle Valve	Brass

## SELECTION CHART - ACL

Locking Ring Mechanism - Remote Mounting - 1/4" tube connector furnished.

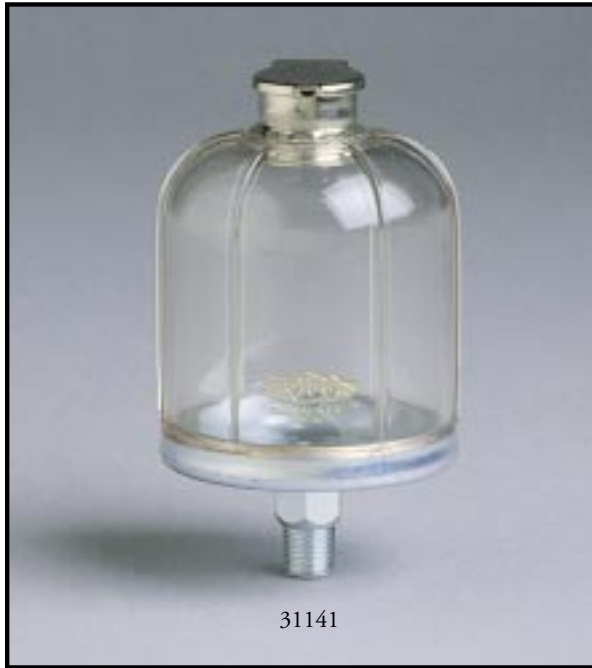
Model No.		Capacity	Mounting Stud	Dimensions (in.)	
Glass	Acrylic			A	B
32111	32010	10 oz.	3/4-16	3-1/8	6-5/8
32117	32016	1 pt.	3/4-16	3-5/8	7-5/8
32133	32032	1 qt.	3/4-16	4-7/16	8-11/16
32181	32080	2.5 qt.	3/4-16	5-11/16	10-13/16
-	32081	1 gal.	3/4-16	5-11/16	15-7/8

**PRO/MARK INDUSTRIALS**

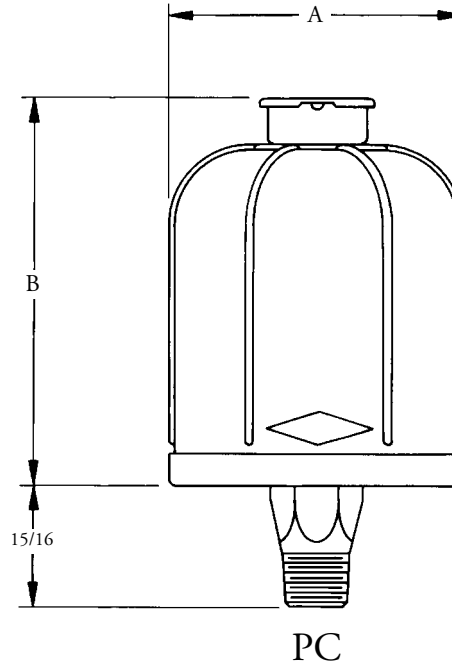
Div. R.D. Lewis Sales Limited

**Lubrication & Fluid Handling Solutions**

# PC Oil Cup



31141



## APPLICATIONS:

PC oil cups serve a dual purpose of providing a small oil reservoir or being used as an oil gauge. The PC oil cup is ideal for applications where it can be directly mounted to a bearing housing, gear box or any other industrial equipment that requires lubricant.

## FEATURES:

- Dust proof, self-closing fill caps supplied with all models.
- Plastic reservoirs have reinforcing ribs for long life and impact resistance.
- Copper brazing of all steel connections provides long life and leak proof design.
- Zinc plating resists corrosion.

## SPECIFICATIONS

Max. Operating Temp.	165°F Continuous
Reservoir	Butyrate Plastic
Material	Steel
Finish	Bright Zinc Plated

## SELECTION CHART

Model No.	Capacity	Connection (NPT)	Dimensions (in.)	
			A	B
31111	1 oz.	1/8	1-5/8	1-5/8
31112	1 oz.	1/4	1-5/8	1-5/8
31121	2 oz.	1/8	1-15/16	2-5/16
31122	2 oz.	1/4	1-15/16	2-5/16
31141	4 oz.	1/8	2-5/16	3
31142	4 oz.	1/4	2-5/16	3
31143	4 oz.	3/8	2-5/16	3
31181	8 oz.	1/8	2-5/8	4
31182	8 oz.	1/4	2-5/8	4
31183	8 oz.	3/8	2-5/8	4

## ***PRO/MARK INDUSTRIALS***

Div. R.D. Lewis Sales Limited

**Lubrication & Fluid Handling Solutions**

# Vari-Feed Wick Oilers



## APPLICATIONS:

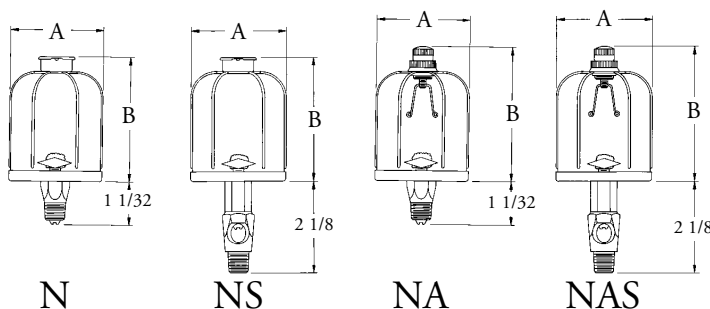
Vari-Feed wick oilers are used to provide a controlled amount of oil to a bearing or other machinery part. The principle of delivery combines gravity feed with capillary action in the wick to provide a constant feed rate of oil regardless of the fill level in the reservoir. Feed rate is determined by the viscosity of the oil and the type of wick being used.

Two styles of operation are available depending on the application. When continuous delivery is required the N or NS models are used.

For on-off control of the oiler, the NA and NAS models have a filler cap with gasket that stops oil delivery when fully closed. By turning the fill cap slightly, the threaded air vent is opened allowing oil to flow.

## FEATURES:

- Feed rate is constant and adjustable only by changing to a different wick.
- 5 wick speeds are available and color coded for easy replacement or installation. A multi-pack of different wick speeds is included with each oiler.
- Dust proof caps supplied with N and NS models. NA and NAS models have sealed cap and operate only when cap is in vent position.
- Plastic reservoirs have reinforcing ribs for long life.
- Oil sights available on NS and NAS models for visual indication of oil flow.
- Copper brazing of all steel connections provides long life and leak proof design.
- Zinc plating resists corrosion.



## SPECIFICATIONS

Max. Operating Temp.	165°F Continuous
Reservoir	Butyrate Plastic
Oil Sight	Acrylic
Sight Gaskets	Buna-N
Wicking	Wire Cored Cotton
Material	Steel and Brass
Finish	Bright Zinc Plated

## SELECTION CHART - N, NS

Model No.		Capacity	Connection (NPT)	Dimensions (in.)	
Type N	Type NS			A	B
30711	30811	1 oz.	1/8	1-5/8	1-5/8
30712	30812	1 oz.	1/4	1-5/8	1-5/8
30721	30821	2 oz.	1/8	1-15/16	2-5/16
30722	30822	2 oz.	1/4	1-15/16	2-5/16
30741	30841	4 oz.	1/8	2-5/16	3
30742	30842	4 oz.	1/4	2-5/16	3
30743	30843	4 oz.	3/8	2-5/16	3
30781	30881	8 oz.	1/8	2-5/8	4
30782	30882	8 oz.	1/4	2-5/8	4
30783	30883	8 oz.	3/8	2-5/8	4

## SELECTION CHART - NA, NAS

Model No.		Capacity	Connection (NPT)	Dimensions (in.)	
Type NA	Type NAS			A	B
30911	31011	1 oz.	1/8	1-5/8	2
30912	31012	1 oz.	1/4	1-5/8	2
30921	31021	2 oz.	1/8	1-15/16	2-7/16
30922	31022	2 oz.	1/4	1-15/16	2-7/16
30941	31041	4 oz.	1/8	2-5/16	3-1/4
30942	31042	4 oz.	1/4	2-5/16	3-1/4
30943	-	4 oz.	3/8	2-5/16	3-1/4
30981	31081	8 oz.	1/8	2-5/8	4-5/16
30982	31082	8 oz.	1/4	2-5/8	4-5/16
30983	31083	8 oz.	3/8	2-5/8	4-5/16

## Replacement Wicks

Packed 50 of one color per carton. Also sold by the foot.

	Model No.	Length	Description
	30701	1-3/8"	White - Very Fast Feed Wick
	30702		Green/White - Fast Feed Wick
	30703		Green - Medium Feed Wick
	30704		Red/White - Slow Feed Wick
	30705		Red - Very Slow Feed Wick

**PRO/MARK INDUSTRIALS**

Div. R. D. Lewis Sales Limited

# CA & CAE Chain Oilers

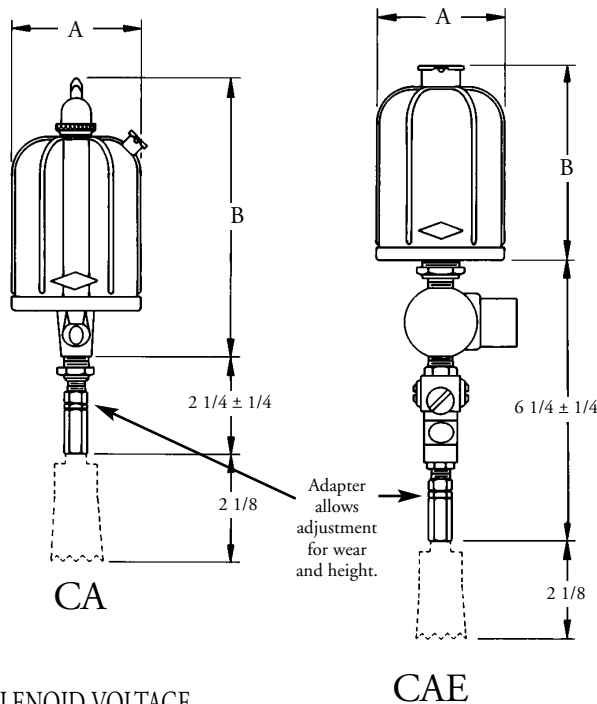
## APPLICATIONS:

CA and CAE chain oilers are designed for light duty lubrication of small chains. They operate on a gravity feed principle supplying an adjustable amount of oil through an applicator to the chain.

In applications requiring automatic control of the oiler, solenoid versions are available.

## FEATURES:

- Toggle shut-off with locking ring (CA model) provides easy to use manual control.
- Solenoid version (CAE model) allows machine interface for maximum versatility.
- Plastic reservoirs have reinforcing ribs for long life.
- Adjustable adapter allows easy setting of applicator to correct height.
- Brazed construction provides long life and leak proof design.



## SOLENOID VOLTAGE

Designator	Voltage
B	120V 60 Hz
C	240V 60 Hz
D	480V 60 Hz

**HOW TO ORDER:** Using the solenoid voltage chart, add a “B”, “C”, or “D” to the model number to specify the correct voltage on solenoid versions.

## PRO/MARK INDUSTRIALS

Div. R.D. Lewis Sales Limited

Lubrication & Fluid Handling Solutions

## SPECIFICATIONS

Max. Operating Temp.	165°F Continuous
Reservoir	Butyrate Plastic
Oil Sight	Acrylic Plastic
Sight Gasket	Buna-N
Material	Steel and Brass
Finish	Bright Zinc Plated Steel Lacquered Satin Finish Brass
“CA” Needle Valve	Steel
“CAE” Sight Needle Valve	Brass
“CAE” Packing Gland	Graphite
Solenoid - UL/CSA Listed	Stainless Steel/Brass

## SELECTION CHART - CA

Manual Control

Model No.	Capacity	Mounting Stud	Dimensions (in.)	
			A	B
35503	4 oz.	1/2-20	2-5/16	4-3/4
35504	8 oz.	1/2-20	2-5/8	5-3/4

## SELECTION CHART - CAE

Electric Solenoid Control - See “How to Order”

Model No.	Capacity	Mounting Stud	Dimensions (in.)	
			A	B
35505	4 oz.	3/4-16	2-5/16	3
35506	8 oz.	3/4-16	2-5/8	4

**ACCESSORIES:** Applicators are ordered separately, please see Applicator document.

# CB & CBE Chain Oilers

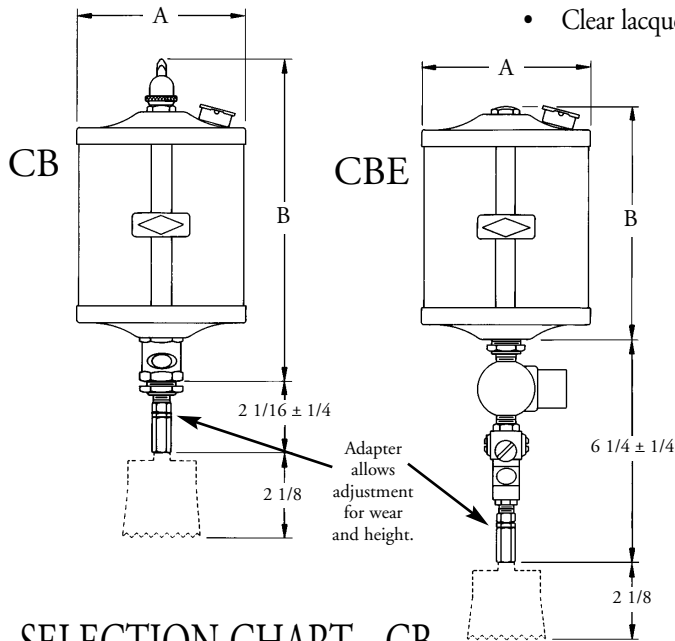


## APPLICATIONS:

CB and CBE chain oilers are designed for nearly all types of chain lubrication. They operate on a gravity feed principle supplying a pre-set amount of oil through an applicator to the chain. With heavy wall acrylic or heat resistant glass reservoirs, and all brass construction, they operate in a wide range of applications. In applications requiring automatic control of the oiler, solenoid versions are available.

## FEATURES:

- Toggle shut-off with locking ring (CB model) provides easy to use manual control.
- Solenoid version (CBE model) allows machine interface for maximum versatility.
- Mounting stud simplifies installation to customer supplied bracket.
- Acrylic reservoirs are heavy wall design for service to 165°F. Heat resistant glass reservoirs operate in temperatures to 250°F.
- Adjustable adapter allows easy setting of applicator to correct height.
- Silver brazing of all brass construction provides long life and leak proof design.
- Clear lacquer finish of brass components resist corrosion.



## SPECIFICATIONS

Max. Operating Temp.	Glass 250°F Continuous Acrylic 165°F Continuous
Reservoir and Sight	Heavy Wall Heat Resistant Glass Heavy Wall Acrylic Plastic
Gasket	Buna-N
Material	Brass
Finish	Lacquered Satin Finish
"CB" Needle Valve	Brass
"CBE" Sight Needle Valve	Brass
Solenoid	Stainless Steel Plunger, Brass Body UL/CSA Listed

## SELECTION CHART - CB

Manual Control

Model No.		Capacity	Mounting Stud	Dimensions (in.)	
Glass	Acrylic			A	B
35512	35513	10 oz.	3/4-16	3-1/8	6-1/2
35514	35515	1 pt.	3/4-16	3-5/8	7-9/16
35516	35517	1 qt.	3/4-16	4-7/16	8-9/16
35518	35519	2.5 qt.	3/4-16	5-11/16	10-3/4
-	35520	1 gal.	3/4-16	5-11/16	15-3/4

SOLENOID VOLTAGE

Designator	Voltage
B	120V 60 Hz
C	240V 60 Hz
D	480V 60 Hz

**HOW TO ORDER:** Using the solenoid voltage chart, add a "B", "C", or "D" to the model number to specify the correct voltage on solenoid versions.

Other Voltages and Frequencies Available. Consult Factory.

## SELECTION CHART - CBE

Electric Solenoid Control - See "How to Order"

Model No.		Capacity	Mounting Stud	Dimensions (in.)	
Glass	Acrylic			A	B
35526	35527	10 oz.	3/4-16	3-1/8	4-1/16
35528	35529	1 pt.	3/4-16	3-5/8	5-3/16
35530	35531	1 qt.	3/4-16	4-7/16	6-3/16
35532	35533	2.5 qt.	3/4-16	5-11/16	8-5/16
-	35535	1 gal.	3/4-16	5-11/16	13-5/16



## ACCESSORIES:

Applicators are ordered separately, please see Applicator document.

# CC & CCE Chain Oilers



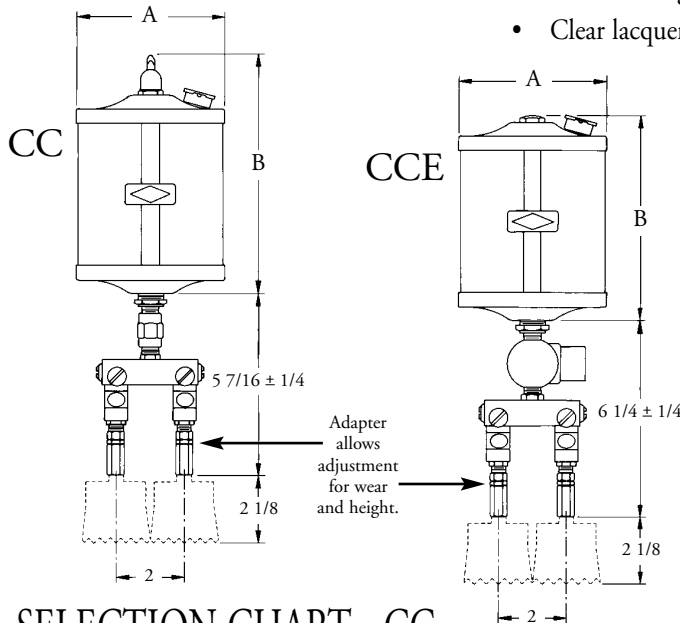
## APPLICATIONS:

CC and CCE chain oilers are designed for chain lubrication on wide or ganged chains up to 4 inches. They operate on a gravity feed principle supplying a pre-set amount of oil through an applicator to the chain. With heavy wall acrylic or heat resistant glass reservoirs, and all brass construction, they operate in a wide range of applications.

In applications requiring automatic control of the oiler, solenoid versions are available.

## FEATURES:

- Toggle shut-off (CC model) provides easy to use manual control.
- Solenoid version (CCE model) allows machine interface for maximum versatility.
- Mounting stud simplifies installation to customer supplied bracket.
- Acrylic reservoirs are heavy wall design for service to 165°F. Heat resistant glass reservoirs operate in temperatures to 250°F.
- Adjustable adapter allows easy setting of applicator to correct height.
- Silver brazing of all brass construction provides long life and leak proof design.
- Clear lacquer finish of brass components resists corrosion.



## SPECIFICATIONS

Max. Operating Temp.	Glass 250°F Continuous Acrylic 165°F Continuous
Reservoir and Sight	Heavy Wall Heat Resistant Glass Heavy Wall Acrylic Plastic
Gasket	Buna-N
Material	Brass
Finish	Lacquered Satin Finish
Packing Gland	Graphite
Sight Needle Valve	Brass
Solenoid	Stainless Steel Plunger Brass Body, UL/CSA Listed

## SELECTION CHART - CC

Manual Control

Model No.		Capacity	Mounting Stud	Dimensions (in.)	
Glass	Acrylic			A	B
-	35541	10 oz.	3/4-16	3-1/8	5-1/16
35542	35543	1 pt.	3/4-16	3-5/8	6-3/16
35544	35545	1 qt.	3/4-16	4-7/16	7-3/16
35546	35547	2.5 qt.	3/4-16	5-11/16	9-5/16
-	35549	1 gal.	3/4-16	5-11/16	14-5/16

## SELECTION CHART - CCE

Electric Solenoid Control - See "How to Order"

Model No.		Capacity	Mounting Stud	Dimensions (in.)	
Glass	Acrylic			A	B
35550	35551	10 oz.	3/4-16	3-1/8	4-1/16
35552	35553	1 pt.	3/4-16	3-5/8	5-3/16
35554	35555	1 qt.	3/4-16	4-7/16	6-3/16
35556	35557	2.5 qt.	3/4-16	5-11/16	8-5/16
-	35559	1 gal.	3/4-16	5-11/16	13-5/16

## SOLENOID VOLTAGE

Designator	Voltage
B	120V 60 Hz
C	240V 60 Hz
D	480V 60 Hz

**HOW TO ORDER:** Using the solenoid voltage chart, add a "B", "C", or "D" to the model number to specify the correct voltage on solenoid versions.

Other Voltages and Frequencies Available. Consult Factory.



## ACCESSORIES:

Applicators are ordered separately, please see Applicator document.



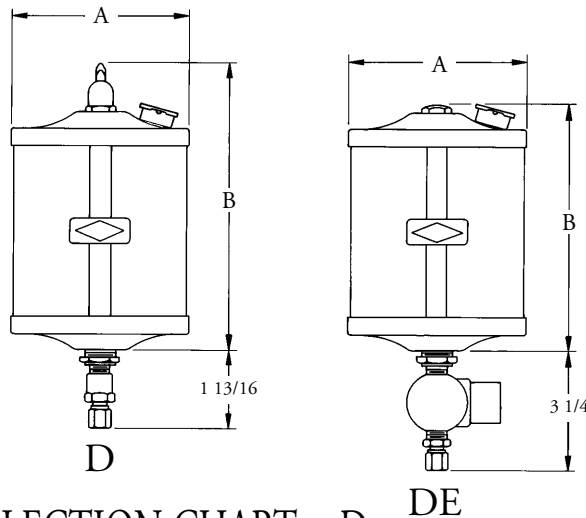
# D & DE Full Flow Dispensers

## APPLICATIONS:

Full flow dispensers are used to lubricate bearings, chains, and other machinery parts when remote valves or manifolds are used. This allows for easy access to the oil reservoir when the valve or manifold is located in a difficult to reach spot. These dispensers are also used in applications where multiple point lubrication is required from one reservoir of oil. With heavy wall acrylic or heat resistant glass reservoirs, and all brass construction, they operate in a wide range of applications. In applications requiring automatic control of the oiler, solenoid versions are available.

## FEATURES:

- Toggle shut-off (D model) provides easy to use manual control.
- Solenoid version (DE model) allows machine interface for maximum versatility.
- Mounting stud simplifies installation to customer supplied bracket.
- Acrylic reservoirs are heavy wall design for service to 165°F. Heat resistant glass reservoirs operate in temperatures to 250°F.
- Silver brazing of all brass construction provides long life and leak proof design.
- Clear lacquer finish of brass components resists corrosion.



## SPECIFICATIONS

Max. Operating Temp.	Glass 250°F Continuous Acrylic 165°F Continuous
Reservoir	Heavy Wall Heat Resistant Glass Heavy Wall Acrylic Plastic
Gasket	Buna-N
Material	Brass
Finish	Lacquered Satin Finish
Solenoid	Stainless Steel Plunger and Brass Body UL/CSA Listed
Needle Valve	Brass

## SELECTION CHART - D

Manual Control - 1/4 Tube Connector Furnished.

Model No.		Capacity	Mounting Stud	Dimensions (in.)	
Glass	Acrylic			A	B
35560	35561	10 oz.	3/4-16	3-1/8	5-1/16
35562	35563	1 pt.	3/4-16	3-5/8	6-3/16
35564	35565	1 qt.	3/4-16	4-7/16	7-3/16
35566	35567	2.5 qt.	3/4-16	5-11/16	9-5/16
-	35569	1 gal.	3/4-16	5-11/16	14-5/16

## SELECTION CHART - DE

Electric Control - 1/4 Tube Connector Furnished. - See "How to Order"

Model No.		Capacity	Mounting Stud	Dimensions (in.)	
Glass	Acrylic			A	B
35570	35571	10 oz.	3/4-16	3-1/8	4-1/16
35572	35573	1 pt.	3/4-16	3-5/8	5-3/16
35574	35575	1 qt.	3/4-16	4-7/16	6-3/16
35576	35577	2.5 qt.	3/4-16	5-11/16	8-5/16
-	35579	1 gal.	3/4-16	5-11/16	13-5/16

## SOLENOID VOLTAGE

Designator	Voltage
B	120V 60 Hz
C	240V 60 Hz
D	480V 60 Hz

**HOW TO ORDER:** Using the solenoid voltage chart, add a "B", "C", or "D" to the model number to specify the correct voltage on solenoid versions.

Other Voltages and Frequencies Available. Consult Factory.

## ACCESSORIES:

V series valves and VM manifolds are ordered separately, please see V series valves and VM manifolds document.

Applicators are ordered separately, please see Applicator document.

**PRO/MARK INDUSTRIALS**

# E & EE Multiple Feed Oilers



## APPLICATIONS:

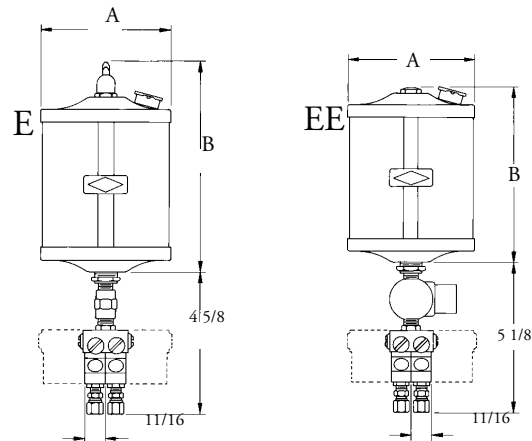
E and EE multiple feed oilers are used to lubricate bearings, chains, and other machinery parts when feed rate adjustment is desired at the dispenser. This allows for easy adjustment when the manifold or lubrication point is located in a difficult to reach spot. With up to 6 outlets, these oilers are also used in applications where multiple point lubrication is required from one reservoir of oil. With heavy wall acrylic or heat resistant glass reservoirs, and all brass construction, they operate in a wide range of applications. In applications requiring automatic control of the oiler, solenoid versions are available.

## FEATURES:

- Toggle shut-off (E model) provides easy to use manual control.
- Solenoid version (EE model) allows machine interface for maximum versatility.
- 3/4-16 mounting stud and 1/4 in. tubing connector simplifies installation to customer supplied bracket.
- Acrylic reservoirs are heavy wall design for service to 165°F. Heat resistant glass reservoirs operate in temperatures to 250°F.
- Silver brazing of all brass construction provides long life and leak proof design.
- Clear lacquer finish of brass components resists corrosion.

## SPECIFICATIONS

Max. Operating Temp.	Glass 250°F Continuous Acrylic 165°F Continuous
Reservoir	Heavy Wall Heat Resistant Glass Heavy Wall Acrylic Plastic
Gasket	Buna-N
Packing Gland	Graphite
Material	Brass
Finish	Lacquered Satin Finish
Solenoid	Stainless Steel Plunger and Brass Body UL/CSA Listed
Sight Needle Valve	Brass



## SELECTION CHART - E

Manual Control

Model No.		Capacity	Mounting Stud	Dimensions (in.)	
Glass	Acrylic			A	B
36000	36001	10 oz.	3/4-16	3-1/8	5-1/16
36002	36003	1 pt.	3/4-16	3-5/8	6-3/16
36004	36005	1 qt.	3/4-16	4-7/16	7-3/16
36006	36007	2.5 qt.	3/4-16	5-11/16	9-5/16
-	36009	1 gal.	3/4-16	5-11/16	14-5/16

## SELECTION CHART - EE

Electric Solenoid Control - See "How to Order"

Model No.		Capacity	Mounting Stud	Dimensions (in.)	
Glass	Acrylic			A	B
36010	36011	10 oz.	3/4-16	3-1/8	4-1/16
36012	36013	1 pt.	3/4-16	3-5/8	5-3/16
36014	36015	1 qt.	3/4-16	4-7/16	6-3/16
36016	36017	2.5 qt.	3/4-16	5-11/16	8-5/16
-	36019	1 gal.	3/4-16	5-11/16	13-5/16

## SOLENOID VOLTAGE

Designator	Voltage
B	120V 60 Hz
C	240V 60 Hz
D	480V 60 Hz

**HOW TO ORDER:** Add the number of outlets (up to 6) to the model number. On solenoid versions, add a "B", "C", or "D" from chart above.

Other Voltages and Frequencies Available. Consult Factory.

## ACCESSORIES:

Type S applicator brackets are ordered separately, please see ST Series Valves/S Series Applicator document.

Applicators are ordered separately, please see Applicator document.

# V Series Valves & VM Manifolds

## APPLICATIONS:

V series valves are used with full flow dispensers where feed rate adjustment is desired at the point of lubrication.

VM series manifolds are used with full flow dispensers and allow applicators to be mounted directly to them. With adjustable adapters and integral needle valves, these manifolds allow easy setting at the point of lubrication.

## FEATURES:

- Horizontal design of needle valve minimizes contamination at the valve seat.
- V series valves and VM manifolds have 1 to 6 outlets.
- Clean out plugs provide easy cleaning when required.
- Heavy wall acrylic or heat resistant glass sights allow easy setting of the desired drip rate.
- Silver brazing of all brass construction provides long life and leak proof design.



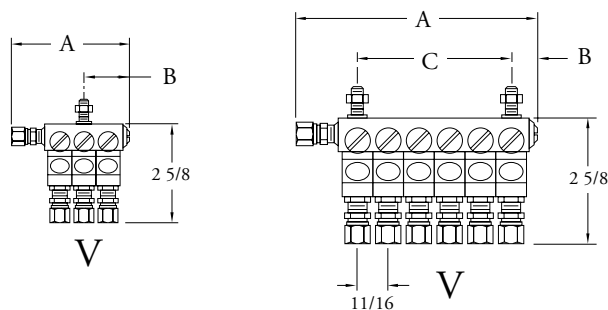
## SPECIFICATIONS

Max. Operating Temp.	Glass 250°F Continuous Acrylic 165°F Continuous
Oil Sight	Heavy Wall Heat Resistant Glass Heavy Wall Acrylic Plastic
Gasket	Buna-N
Packing Gland	Graphite
Material	Brass
Finish	Lacquered Satin Finish
Needle Valve	Brass

## SELECTION CHART -V SERIES VALVES

1/4 Tube Connector Furnished.

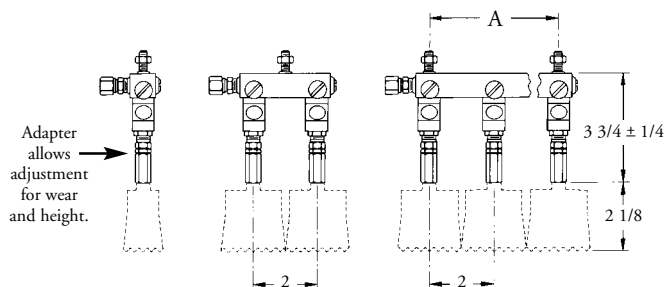
Model No.		No. of Valve Outlets	Mounting Stud	Dimensions (in.)		
Glass	Acrylic			A	B	C
30171	30271	1	1/4-20	2	5/8	-
30172	30272	2	1/4-20	2-11/16	31/32	-
30173	30273	3	1/4-20	3-3/8	1-5/16	-
30174	30274	4	1/4-20	4-1/16	1-21/32	-
30175	30275	5	1/4-20	4-3/4	2	-
30176	30276	6	1/4-20	5-7/16	5/8	3-7/16



## SELECTION CHART - VM MANIFOLDS

1/4 Tube Connector Furnished

Model No.		No. of Valves	Mounting Stud	Dimensions (in.)
Glass	Acrylic			A
35581	35591	1	1/4-20	-
35582	35592	2	1/4-20	-
35583	35593	3	1/4-20	4
35584	35594	4	1/4-20	6
35585	35595	5	1/4-20	8
35586	35596	6	1/4-20	10



**PRO/MARK INDUSTRIALS**

Div. R.D. Lewis Sales Limited

# ST Series Valves / S Series Applicator

## APPLICATIONS:

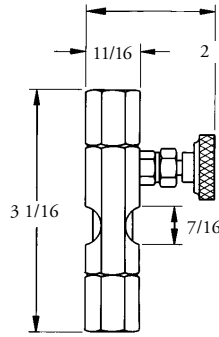
ST series valves are used with full flow dispensers where feed rate adjustment is desired at the point of lubrication. When variable operating conditions require frequent adjustment, the large, knurled knob simplifies setting the desired feed rate.



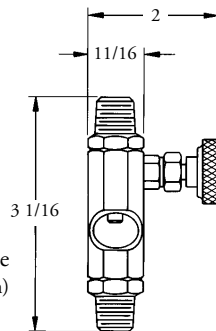
32404

## FEATURES:

- Horizontal design of needle valve minimizes contamination at the valve seat.
- Double female or double male threads simplify installation.
- Heavy wall polycarbonate or heat resistant glass sights allow easy setting of the desired drip rate.
- Silver brazing of all brass construction provides long life and leak proof design.
- Clear lacquer finish of brass components resists corrosion.



ST Double Female  
(Parallel Sight Shown)



ST Double Male  
(Right Angle Sight Shown)

## SPECIFICATIONS

Max. Operating Temp.	220°F Continuous
Oil Sight	Heavy Wall Heat Resistant Glass High Impact Strength Polycarbonate Plastic
Gasket	Buna-N
Packing Gland	Self Lubricating Buna-N
Material	Brass
Finish	Lacquered Satin Finish
Needle Valve	Brass

## SELECTION CHART

Double Female

Model No.		Connection (NPT)		Sight Position
Glass	Plastic	In	Out	
32401	32405	1/8	1/8	Parallel
32402	32406	1/4	1/4	Parallel
32403	32407	1/8	1/8	Right Angle
32404	32408	1/4	1/4	Right Angle

## SELECTION CHART

Double Male

Model No.		Connection (NPT)		Sight Position
Glass	Plastic	In	Out	
32391	32395	1/8	1/8	Parallel
32392	32396	1/4	1/4	Parallel
32393	32397	1/8	1/8	Right Angle
32394	32398	1/4	1/4	Right Angle

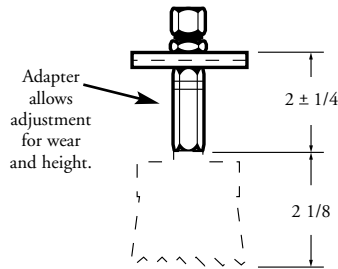
## S SERIES APPLICATOR BRACKETS

### APPLICATIONS:

S series applicator brackets provide an easy way to mount applicators in remote mounting applications. These brackets are used with full flow dispensers.

### FEATURES:

- Rigid steel extrusion, nickel plated for durable installation.
- Mounting hole and 1/4 in. tubing connector simplifies installation.
- Adjustable for brush wear.



## SELECTION CHART

Model No.	Gang	Mounting Hole Diameter (in.)
36024	1	17/64



36024

**PRO/MARK INDUSTRIALS**

Div. R. D. Lewis Sales Limited

# Applicators

## EVEN-FLO® APPLICATORS

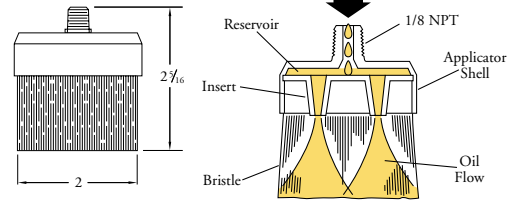


### APPLICATIONS:

The unique internal reservoir design of these applicators allow uniform dispensing of oil for chain lubrication. They are capable of handling a wide viscosity range of oils.

Stainless steel models provide long life and excellent cleaning capability in harsh environments.

Nylon and stainless steel models rated to 160°F.



### SELECTION CHART

1/8 NPT connections.

Model No.	Bristle Type
36051	Nylon
36054	Stainless Steel

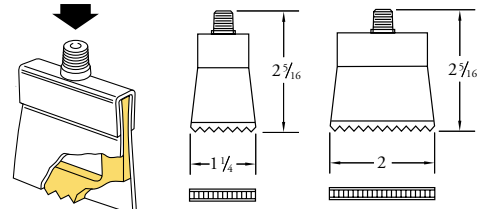
## EVER-LAST® APPLICATORS



### APPLICATIONS:

Patented Ever-Last applicators use four part construction to provide long life in the most demanding applications. Using ordinary shears, they may be trimmed to fit the exact size of chain and eliminate uneven wear of the applicator or side dripping of the lubricant. Using a neoprene cover and felt plate, the mechanical motion of the chain movement sets up a pumping action in the applicator.

Temperature rating of 200°F.



### SELECTION CHART

1/8 NPT connections.

Model No.	Width (in.)
36033	1-1/4
36036	2

## ROUND BRUSH APPLICATORS

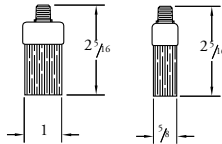


### APPLICATIONS:

Tqwpf brushes are used in applications requiring broad contact surfaces for lubricating and cleaning. They offer even oil distribution on the wearing points of chain.

Stainless steel models provide long life and excellent cleaning capability in harsh environments.

Nylon and stainless steel models rated to 160°F.



### SELECTION CHART

1/8 NPT connections.

Model No.	Size (in.)	Bristle Type
36039	5/8	Nylon
36042	5/8	Stainless Steel
36045	1	Nylon
36048	1	Stainless Steel

## ROTARY APPLICATORS



### APPLICATIONS:

Tqvc{ applicators are used to lubricate and clean chains.

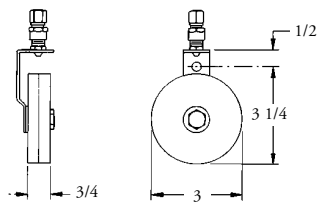
Available with a 3 inch nylon or stainless steel rotary brush, they provide chain driven cleaning or lubricating at the speed of the chain. They may be mounted in any orientation to the chain, but when located under the chain they are only used for cleaning.

Nylon brushes rated for temperatures to 250°F and stainless steel models rated to 400°F.

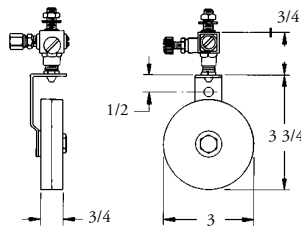
REPLACEMENTS: BRUSHES

Model No.	Description
36090	3" Nylon Rotary Brush (1 pair)
36093	3" Stainless Steel Rotary Brush (1 pair)

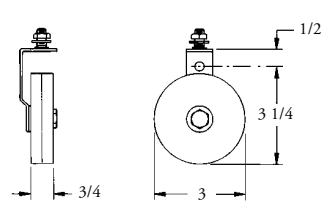
REMOTE ROTARY BRACKET FOR 1/4" TUBE



REMOTE ROTARY BRACKET/VALVE ASSEMBLY



ROTARY BRACKET ASSEMBLY WITH MOUNTING STUD



ACCEPTS 1/4 O.D. TUBE 5/16 MOUNTING HOLE

Model No.	Bristle Type
36072	Nylon
36075	Stainless Steel

ACCEPTS 1/4 O.D. TUBE 5/16-18 MOUNTING STUD 5/16 MOUNTING HOLE

Model No.	Bristle Type
36084	Nylon
36087	Stainless Steel

5/16-18 MOUNTING STUD 5/16 MOUNTING HOLE

Model No.	Bristle Type
36078	Nylon
36081	Stainless Steel

**PRO/MARK INDUSTRIALS**

Div. R.D. Lewis Sales Limited